

Excella® Shakers

Superior Performance at an Affordable Price



New Brunswick
an eppendorf company

NBS Excella® Shakers



New Brunswick Scientific's Excella line of biological shakers provides advanced features and excellent performance at an affordable price. All eight temperature-controlled and open-air Excella models feature heavy-duty drives, providing long life and quiet operation under moderate loads and at speeds up to 400 rpm. A wide variety of interchangeable platforms, clamps and test tube racks provide virtually unlimited flexibility. Excella... simply the best performing biological shakers in their price class!

Excella Shakers feature:

- **Microprocessor Controls** to enable precise setting of speed, running time and temperature; and automatically compensate for changes in load, voltage and temperature*
- **Easy-to-Use Keypad** to reduce operator error in establishing running conditions*
- **Large LED display** to provide a clear view of operating parameters*
- **Unique Acceleration/Deceleration Circuit** to prevent sudden starts and stops*
- **Timer** to enable programmable shaking periods from 0.1 – 99.9 hours with automatic agitation shutoff
- **Clear Audible and Visible Alarms** to alert you to setpoint deviations of ≥ 2 rpm and $\geq 5^{\circ}\text{C}$ *
- **Certification:** cETLus meets UL, CSA and CE standards

** Applies to all models except the analog-controlled E1, which is provided with reference calibrations that allow the shaker to be set manually for reproducible results from one run to the next.*

Temperature-Controlled Excella Shakers

When there is a need to precisely control temperature either by heating, refrigeration or both, the Excella line of Incubated/Refrigerated Shakers will meet your critical needs.

- **Flask Capacity:**
 - Benchtop E24 Series: For flasks up to 2.8 Liters
 - Console E25 Series: For flasks up to 6 Liters
- **Temperature Control**
 - E24 & E25: 7°C above ambient to 60°C
 - E24R & E25R: 15°C below ambient to 60°C
 - Accuracy: $\pm 0.1^{\circ}\text{C}$ at 37°C
- **Orbit**
 - E24 & E24R: $3/4"$ (1.9 cm)
 - E25 & E25R: $1"$ (2.5 cm)
- **Agitation:** 50 – 400 rpm, ± 2 rpm
- **Uniform Temperature Control** and rapid temperature recovery result from microprocessor feedback controls, air-tight chamber and high-velocity fans
- **Thermostat Fail-Safe** device turns off heaters if the high temperature limit is exceeded
- For operator safety, an **Open Lid Cutoff Switch** immediately stops agitation when the lid is opened
- **RS-232** provided for data logging

Benchtop Open-Air Shakers

When built-in temperature control is not required, NBS Excella Open-Air Shakers are the perfect solution. These ruggedly built shakers are ideal for use on the bench, inside incubators, or in a warm or cold room.

- **Flask Capacity:**
 - E1 & E2: For flasks up to 500 mL
 - E5 & E10: For flasks up to 6 Liters
- **All but the E1 are microprocessor controlled** with digital display
- **Analog-controlled E1** provides a low-cost solution for more basic needs
- **Calibrate the speed** using the microprocessor-controlled keypad*
- **Agitation:** 50 – 400 rpm, ± 2 rpm
- **Orbit**
 - E1, E2, E5: $3/4"$ (1.9 cm)
 - E10: $1"$ (2.5 cm)



Excella E25



Excella E24

Model	Description	Electrical	Catalog No.	Dimensions (W x D x H)	Platform Size	Weight	Ambient Operating Conditions
E24	Benchtop Incubated 3/4" (1.9 cm) Orbit Shaker	120 V, 50/60 Hz	M1352-0000	22 x 30 x 24" (56 x 76 x 61 cm)	18 x 18" (46 x 46 cm)	Net: 133 lbs (60 kg)	10°C to 35°C Humidity: 20–80% Non-Condensing
		230 V, 50/60 Hz	M1352-0002			Gross: 200 lbs (91 kg)	
E24R	Benchtop Incubated/Refrigerated 3/4" (1.9 cm) Orbit Shaker	120 V, 50/60 Hz	M1352-0004	22 x 30 x 24" (56 x 76 x 61 cm)	18 x 18" (46 x 46 cm)	Net: 175 lbs (79 kg)	10°C to 35°C Humidity: 20–80% Non-Condensing
		230 V, 50/60 Hz	M1352-0006			Gross: 245 lbs (111 kg)	
E25	Console Incubated 1" (2.5 cm) Orbit Shaker	120 V, 50/60 Hz	M1353-0000	50 x 30.5 x 41.7" (127 x 77.5 x 106 cm)	30 x 18" (76 x 46 cm)	Net: 367 lbs (167 kg)	10°C to 35°C Humidity: 20–80% Non-Condensing
		230 V, 50/60 Hz	M1353-0002			Gross: 527 lbs (239 kg)	
E25R	Console Incubated/Refrigerated 1" (2.5 cm) Orbit Shaker	120 V, 50/60 Hz	M1353-0004	50 x 30.5 x 41.7" (127 x 77.5 x 106 cm)	30 x 18" (76 x 46 cm)	Net: 431 lbs (196 kg)	10°C to 35°C Humidity: 20–80% Non-Condensing
		230 V, 50/60 Hz	M1353-0006			Gross: 591 lbs (268 kg)	



Excella E1



Excella E2



Excella E5



Excella E10

Model	Description	Electrical	Catalog No.	Dimensions (W x D x H)	Platform Size	Weight	Controls
E1	Open-Air Shaker with 3/4" (1.9 cm) Orbit	120 V, 50/60 Hz	M1354-0000	15.8 x 17.9 x 8.5" (40 x 45.5 x 21.6 cm)	13 x 11" (33 x 28 cm)	Net: 51 lbs (23 kg)	Analog
		230 V, 50/60 Hz	M1354-0001			Gross: 60 lbs (27 kg)	
E2	Open-Air Shaker with 3/4" (1.9 cm) Orbit	120 V, 50/60 Hz	M1350-0000	15.8 x 17.9 x 8.5" (40 x 45.5 x 21.6 cm)	13 x 11" (33 x 28 cm)	Net: 52 lbs (24 kg)	Digital
		230 V, 50/60 Hz	M1350-0001			Gross: 61 lbs (28 kg)	
E5	Open-Air Shaker with 3/4" (1.9 cm) Orbit	120 V, 50/60 Hz	M1355-0000	20.5 x 17.9 x 8.5" (52 x 45.5 x 21.6 cm)	18 x 18" (46 x 46 cm)	Net: 85 lbs (39 kg)	Digital
		230 V, 50/60 Hz	M1355-0001			Gross: 95 lbs (43 kg)	
E10	High Capacity Open-Air Shaker with 1" (2.5 cm) Orbit	120 V, 50/60 Hz	M1351-0000	30 x 27 x 8.5" (76 x 68.6 x 21.6 cm)	30 x 18" (76 x 46 cm)	Net: 93 lbs (42 kg)	Digital
		230 V, 50/60 Hz	M1351-0001			Gross: 115 lbs (52 kg)	

Accessories, Platforms and Test Tube Racks

- A. Universal Platform:** Provides flexibility for mixing different sizes of glassware on a single platform (accessory flask clamps, racks and sticky tape/pad, sold separately)

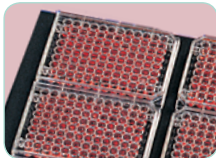
 - Flask Clamps:** Stainless-steel, single-piece construction ensures rigid strength and safety
 - Sticky Tape:** 16.4' x 1.6" (5 m x 4 cm) roll, ideal for small flasks and speeds up to 250 rpm (M1250-9600)
- B. Dedicated Platform:** Provides maximum capacity when using a single flask size, and comes with clamps installed
- C. Utility Tray:** Quickly place/remove samples on the non-skid mat. For low-speed applications. **Utility Carrier**, not shown, adds 2 adjustable bars
- D. Sticky Pad:** 8" x 8" (20 x 20 cm) pad uses adhesive to secure flasks or racks in place; simply wash to regenerate; for speeds up to 250 rpm (M1200-9700). Requires Adapter Kit
- E. Test Tube Racks:** Mounts to Universal Platforms; thumb screws let you easily adjust the angle of the rack to increase media oxygenation as well as quickly remove the rack holder for transporting tubes from shaker to bench; available in a variety of sizes
- F. Microplate Holders:** Mount to any universal platform for shaking microplates. Microplate Platforms (not shown) are also offered for models E10 and E25



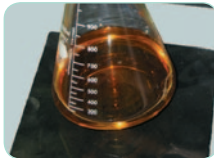
A



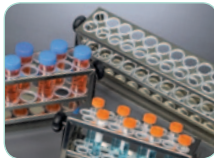
B



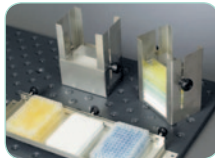
C



D



E



F

Test Tube Racks

Test Tube Diameter	Small Rack		Medium Rack		Large Rack	
	Capacity	Catalog No.	Capacity	Catalog No.	Capacity	Catalog No.
8 to 11 mm	48	M1289-0001	60	M1289-0010	80	M1289-0100
12 to 15 mm	34	M1289-0002	44	M1289-0020	60	M1289-0200
15 to 18 mm	24	M1289-0003	31	M1289-0030	42	M1289-0300
18 to 21 mm	18	M1289-0004	23	M1289-0040	30	M1289-0400
21 to 26 mm	13	M1289-0005	16	M1289-0050	22	M1289-0500
26 to 30 mm	12	M1289-0006	16	M1289-0060	20	M1289-0600

Platforms & Flask Clamps

Description	Catalog No.	Used With	10 ml	25 ml	50 ml	125 ml	250 ml	500 ml	1 L	2 L	2.8 L	4 L	6 L	Microplate Holders	
														1 Layer	Stack
Universal Platforms	M1001-0240	E1, E2	60	20	15	11	6	4							3
	M1250-9902	E5, E24/24R	109	64	45	21	18	14	8	5	4	4*	2*	2	8
	M1250-9920	E10, E25/25R			92	39	30	18	12	8	6	6	4	4	16
Dedicated Platforms (clamps included)	AG2-10	E1, E2	60												
	M1190-9919			32											
	M1190-9915				20										
	M1190-9916					12									
	M1190-9917						8								
	M1190-9918							6							
	M1194-9903	E5, E24/24R			64										
	M1194-9904					34									
	M1194-9905						25								
	M1194-9906							16							
	M1194-9907								9						
	M1194-9908									5					
	M1194-9932										4				
	M1191-9908	E10, E25/25R			108										
	M1191-9909					60									
	M1191-9910						40								
	M1191-9911							24							
	AG-1								15						
	AG-2									12					
	AG-28										6				
	AG-4											6			
	AG-6												4		

Flask Clamp Size	10 ml	25 ml	50 ml	125 ml	250 ml	500 ml	1 L	2 L	2.8 L	4 L	6 L	Microplate Holders	
												1 Layer	Stack
Catalog No.	ACE-10S	M1190-9004	M1190-9000	M1190-9001	M1190-9002	M1190-9003	ACE-1000S	ACE-2000S	ACFE-2800S	ACE-4000S	ACE-6000S	TTR-221	M1289-0700

* Model E5 only



WolfLabs

Pricing on any accessories shown can be found by keying the part number into the search box on our website.

The specifications listed in this brochure are subject to change by the manufacturer and therefore cannot be guaranteed to be correct. If there are aspects of the specification that must be guaranteed, please provide these to our sales team so that details can be confirmed.

www.wolflabs.co.uk

Tel : 01759 301142

Fax : 01759 301143

sales@wolflabs.co.uk

Please contact us if this literature doesn't answer all your questions.